

18.600

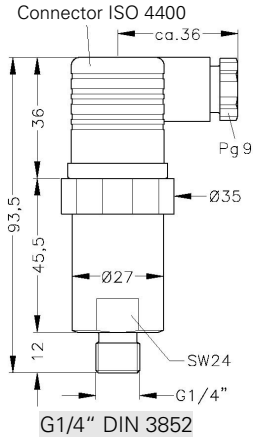
OEM Pressure Transmitter

Technical Data

Permissible temperatures

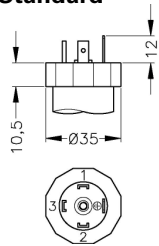
Medium	-25 ... 90 °C	Electronics / environment	-25 ... 85 °C	Storage	-40 ... 100 °C
--------	---------------	---------------------------	---------------	---------	----------------

Mechanical connection (dimensions in mm)



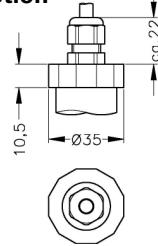
Electrical connection (dimensions in mm)

Standard



ISO 4400 (IP 65)

Option ²



Cable gland (IP 67) ³

Materials

Pressure port / housing	aluminium, black anodized	
Seals (media wetted)	FKM	
Sensor	$P_N \leq 1$ bar: stainless steel 1.4305 (303), RTV, ceramics Al_2O_3 , silicon	$P_N > 1$ bar: ceramics Al_2O_3 96 %
Media wetted parts	pressure port, seals, sensor	

Miscellaneous

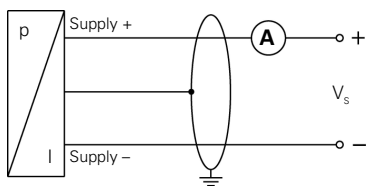
Suitable for following media	non-aggressive gases, slightly polluted air, nitrogen
------------------------------	---

Pin configuration

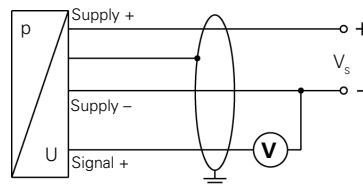
Electrical connection		ISO 4400	cable colours (DIN 47100)
2-wire-system	Supply +	1	white
	Supply -	2	brown
	Ground	ground contact	yellow / green (shield)
3-wire-system	Supply +	1	white
	Supply -	2	brown
	Signal +	3	green
	Ground	ground contact	yellow / green (shield)

Wiring diagrams

2-wire-system (current)



3-wire-system (voltage)



² other electrical connections on request

³ different cable types and lengths available; standard: 2m PVC cable without ventilation tube, optionally cable with ventilation tube

